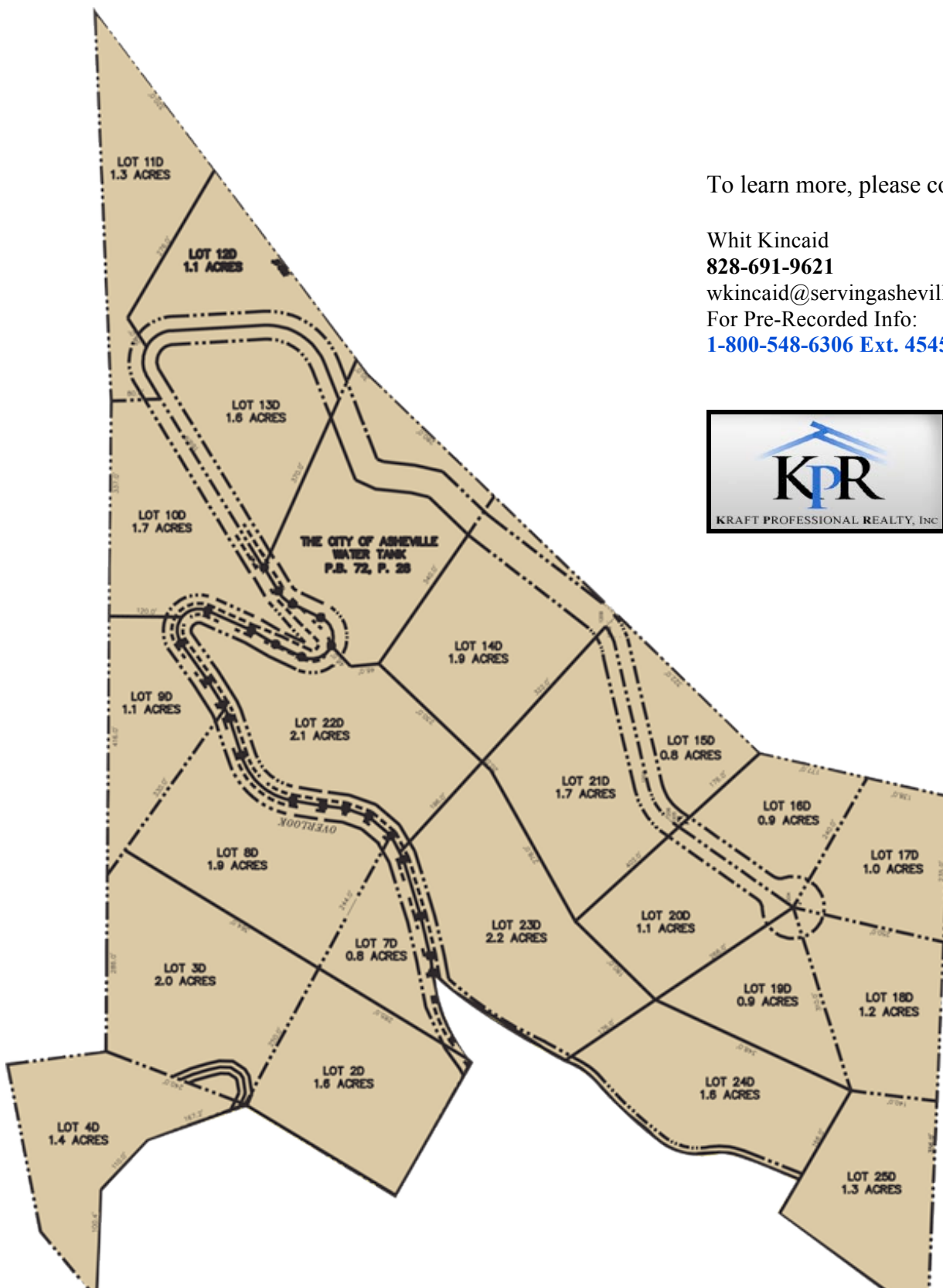




The Eyrie at Keswick Hills

Elevation: 2,350 - 2,600 ft

Future Development: Large, private, mountain top lots are deep within the old-growth-hardwood forest in The Eyrie. Enjoy magnificent panoramic views from the top of the cliffs of Keswick Hills from nearly level lots.



To learn more, please contact:

Whit Kincaid
 828-691-9621
wkincaid@servingasheville.com
 For Pre-Recorded Info:
[1-800-548-6306 Ext. 4545](tel:1-800-548-6306)

