

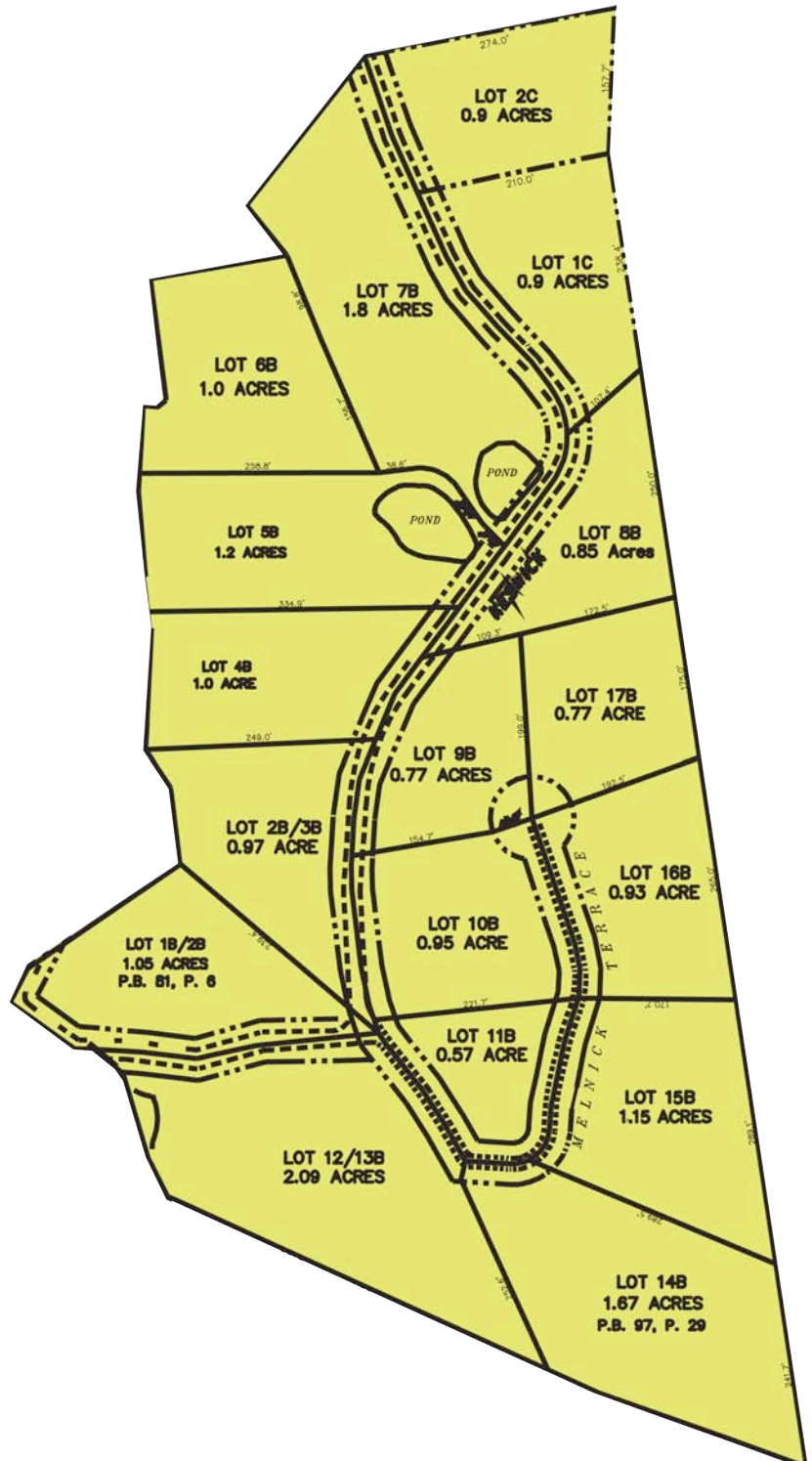
KESWICK HILLS
Gracious Mountain Living



The Laurels at Keswick Hills

Elevation: 2,275 - 2,350 ft

These secluded lots with gentle topography provide a wonderful retreat in the woods, many with views of the Blue Ridge Mountains.



To learn more, please contact:

Whit Kincaid
828-691-9621
wkincaid@servingasheville.com
For Pre-Recorded Info:
[1-800-548-6306 Ext. 4545](tel:1-800-548-6306)

