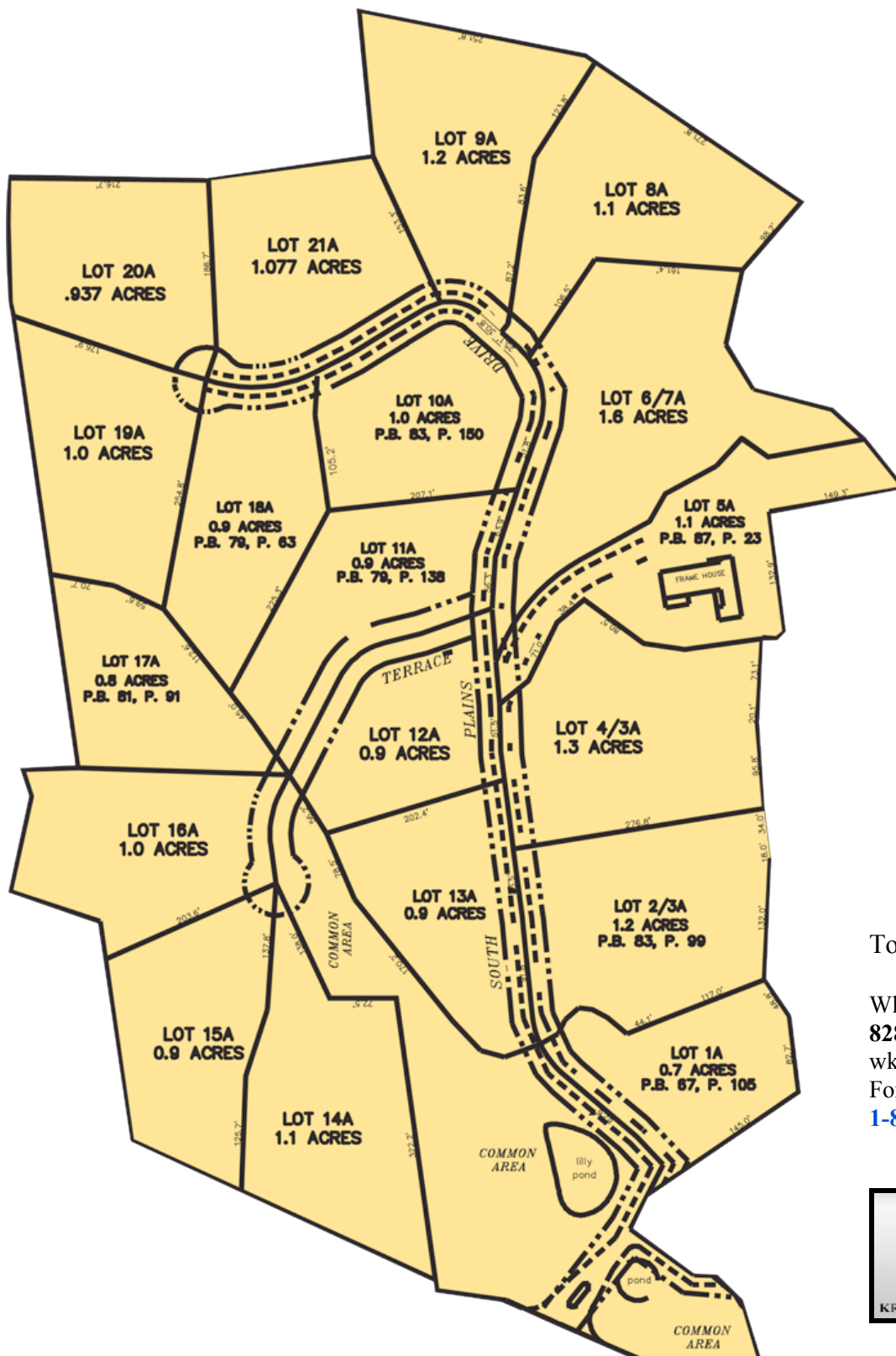




### The Plains at Keswick Hills

Elevation: 2,275 - 2,350 ft

These beautiful, wooded, spacious lots enjoy beautiful gentle to moderate topography with some views.



To learn more, please contact:

Whit Kincaid  
 828-691-9621  
[wkincaid@servingasheville.com](mailto:wkincaid@servingasheville.com)  
 For Pre-Recorded Info:  
**1-800-548-6306 Ext. 4545**

